

COLOUR LED PRINTER
Epson AcuLaser™ CX17NF/C1700

EPSON
EXCEED YOUR VISION

Astonishingly capable.
Surprisingly small.
Simply revolutionary.



Epson AcuLaser™ CX17NF
LED Printer

Epson AcuLaser™ C1700
LED Printer

IMAGING
INNOVATION



POWER
SAVINGS



FAST
PERFORMANCE



HIGHLY
COMPACT

The Epson AcuLaser™ C1700 and CX17NF LED printers deliver all the quality and reliability of laser printers in a very compact size and at a highly competitive cost per page.

• **Affordable and Economical**

Highly affordable and power efficient main units, with low toner cartridge cost, low cost per page and paper saving features like duplex and multiple-up printing.

• **Maximise Productivity**

C1700 and CX17NF are among the fastest LED printers in their class with print speeds of up to 12 ppm for colour and 15 ppm for B&W. High memory capacity of up to 128 MB ensures highly efficient processing of print jobs.

• **Multifunctional Capabilities**

Improve your office workflow and productivity with the integrated print, scan, copy, network and fax features on the Epson AcuLaser™ CX17NF LED printer.



IMAGING INNOVATION

Epson AcuLaser™ CX17NF LED Printer

The Epson AcuLaser™ C1700 and CX17NF LED printers are the ideal solution for anyone who demands high-quality printing in a highly efficient and cost-effective package. Now you can add professional quality images and text to your documents while enjoying lower running costs.

Affordable and Economical

The LED printers are highly affordable with a low main unit price for both models, low cost toner cartridges and paper saving functions such as manual duplex printing and multiple-up printing. SOHO users with low print volumes can choose economical standard toner cartridges while corporate users with high print volumes can opt for high capacity toner cartridges to achieve lower cost per page.



Manual Duplex Printing

Optimise Your Office Productivity

The LED printers deliver uncompromising performance with print speeds of up to 15/12 ppm (Bk/C). Hi-speed USB 2.0 comes standard while the Epson AcuLaser™ CX17NF includes support for Ethernet and IPv6.

You will also enjoy the benefits of quick processing of multiple print jobs as a result of the high memory capacity in the LED printers. Further increase productivity with the flexibility of direct scanning to email and network folders as well as USB storage devices, and direct printing from USB storage devices. The printers come with pre-installed toner cartridges so that you can get started right away.

Fully-featured with Print, Scan, Copy and Fax Functions

(For Epson AcuLaser™ CX17NF LED printer only)



Print



Scan



Copy



Fax



Ethernet

With fast print speeds and a convenient 15-sheet automatic document feeder, you can get more done in less time. Improve your productivity further with direct scanning or copying to email and network folders, and even USB storage devices.

Faxing is fast and effortless with a fax speed of up to 3 sec per page, up to 99 speed dials, 6 group dials and PC-Fax (send only) capability. The 200 page* fax storage memory ensures all incoming faxes will be received securely. Other handy features include:

1. Auto Redials (up to 9 times)
2. Delayed Sending
3. Fax Broadcast (up to 99 recipients)
4. Junk Mail Filter
5. Polling (poll to receive)
6. Remote Receive

*For details, please refer to specifications

Exceptional Output Every Time

With one of the highest print resolutions in its class at 1200 x 2400 dpi (unenhanced), you can be assured of crisp, clear text, graphics and images down to the finest details on all of your documents.

Revolutionary Design for Smaller Footprint and Toner Cartridge Size

The LED printers pack all the features and performance you need in a colour business printer, into a highly compact and efficient package. Not only are the main units small in footprint, even the toner cartridges are much smaller to take up less space compared to conventional cartridges.

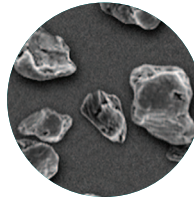
*For details, please refer to specifications



Epson AcuLaser™ C1700 LED Printer

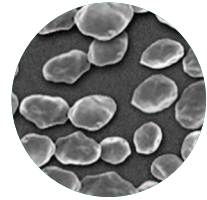
Uniform Image Quality

Conventional Toner



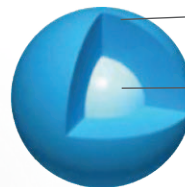
Average particle size: 8.0 micron
Particle shape: non-uniform

Epson AcuBrite™ Toner

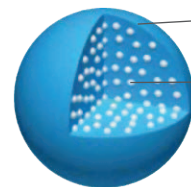


Average particle size: 5.8 micron
Particle shape: uniform

Uniform Distribution of Pigment and Wax



Conventional Toner



Epson AcuBrite™ Toner

The uniform distribution of wax provides the optimum amount of wax required for fusion as well as outstanding transparency for OHP presentations.

Vibrant and High Quality Printing



The Epson AcuLaser™ C1700 and CX17NF LED printers use Epson AcuBrite™ toners that ensure uniform toner particle

size and wax distribution, giving you consistently rich image quality that impresses. Through this unique printing technology, you get superb clarity with sharpness and outstandingly crisp and bold black text that lasts.

Low Power Consumption and Eco-Friendliness



Accredited under the Energy Star programme, a government initiative spearheaded by the United States that promotes the use of energy-efficient products, the Epson AcuLaser™ C1700 and CX17NF LED printers offer a number of features that will help you enjoy significant energy savings and protect our environment.

	Epson AcuLaser™ CX17NF LED Printer	Epson AcuLaser™ C1700 LED Printer
FUNCTION	Print, Scan, Copy, Fax, Network	Print
ADF	Yes	No
PRINT SPEED (Bk/C)	15/12ppm	12/10ppm
MEMORY CAPACITY	128MB	64MB
PROCESSOR	295MHz	192MHz
INTERFACE	Ethernet (10Base-T/100Base-TX), High Speed USB 2.0 (Device, Host), Fax RJ-11	High Speed USB 2.0

Partners in Perfection

Epson Perfection™ V33 Scanner (for Epson AcuLaser™ C1700 LED printer)

Achieving high quality scans is a snap with the Epson Perfection V33. Its 4800 dpi optical resolution captures every photo, document, 3D object and oversized artworks with amazing clarity and detail.



Epson EB-G5000 Series Projectors

Experience brilliant image quality with the world's number 1 projectors*. High powered projection solutions that offer reliability and outstanding performance in every environment. Epson 3LCD projectors offer superior colour luminance, producing vivid and sharp images.



*Source: Futuresource Consulting

SPECIFICATIONS

Epson AcuLaser™ CX17NF LED Printer

All-In-One

Weight:15kg



Epson AcuLaser™ C1700 LED Printer

Weight:10.6kg



*1 The measuring method complies with ISO/IEC19798 and ISO/IEC24712.



EPSON and EXCEED YOUR VISION are registered trademarks of Seiko Epson Corporation.

All other product names and other company names used herein are for identification purposes only and are the trademarks or registered trademarks of their respective owners.

EPSON disclaims any and all rights in those marks. Scan/Print samples shown herein are simulations. Specifications are subject to change without notice.

Machine life for C1700 and CX17NF is rated at approximately 30,000 pages.

MODEL		Epson AcuLaser™ CX17NF LED Printer	Epson AcuLaser™ C1700 LED Printer
PRODUCT CODE		C11CB71061	C11CB71001
PRINTER TYPE PRINTING METHOD RESOLUTION PROCESSOR		Print/Scan/Copy/Fax/Ethernet Colour LED Printer 1200 x 2400 dpi 295 MHz	Print Colour LED Printer 1200 x 2400 dpi 192 MHz
PRINT FEATURES PRINT SPEED FIRST PAGE OUT TIME WARM UP TIME		15/12 ppm (Bk / Cl) Less than 12.5 / 15 sec (Bk / Cl) Less than 36 sec (from Power off to Ready) Less than 25 sec (from Deep sleep to Ready)	12/10 ppm (Bk / Cl) Less than 15 / 17.3 sec (Bk / Cl) Less than 25 sec
COPY FEATURES COPY RESOLUTION COPY SPEED FIRST COPY OUT TIME MULTIPLE COPIES ADF CONTINUOUS COPY		Up to 600 x 600 dpi Up to 15cpm (A4 Mono) Up to 12cpm (A4 Colour) Less than 24 sec (A4/Mono) Less than 40 sec (A4 Colour) 1 - 99 sheets Up to 15 sheets	
SCAN FEATURES SCANNING METHOD SCAN RESOLUTION COLOUR DEPTH ADF CAPACITY SCAN AREA SCAN-TO FUNCTIONS		Flatbed, ADF colour scan Up to 1200 x 1200 dpi 24 bit (Colour), 8 bit (Grayscale) Up to 15 sheets Up to 215.9 x 297 mm Up to 215.9 x 355.6 mm Scan to Email, FTP (server), SMB and USB memory devices	
FAX FEATURES FAX SPEED TRANSMISSION SPEED RECEIVE MEMORY SPEED DIAL NUMBERS GROUP DIAL NUMBERS FAX FUNCTIONS		Up to 3 sec / page 33.6 Kbps 2MB (Up to 200 pages based on ITU-T No. 1 chart, A4, normal resolution mode) Up to 99 numbers Up to 6 groups Speed dial, PC Fax, Memory Reception	
PAPER HANDLING STANDARD PAPER INPUT MULTI-PURPOSE TRAY PAPER TYPE PAPER SIZE WIDTH LENGTH PAPER WEIGHT MAXIMUM PAPER INPUT		Up to 160 sheets (Multi-purpose Feeder: 150 sheets + Priority Sheet Inserter: 10 sheets) Plain Paper, Bond, Lightweight Cardstock, Lightweight Glossy Cardstock, Recycled, Labels, Envelope, Letterhead, Pre-printed, Hole-punched, Colored, Special, Custom A4, B5, A5, LT, LGL, EXE, Folio, Envelope (Com #10, Monarch, DL, C5) 76.2 - 215.9mm 220 - 355.6mm 60 - 163g/m2 Up to 160 sheets	Up to 150 sheets Plain Paper, Bond, Lightweight Cardstock, Lightweight Glossy Cardstock, Recycled, Labels, Envelope, Letterhead, Pre-printed, Hole-punched, Colored, Special, Custom A4, B5, A5, LT, LGL, EXE, Folio, Envelope (Com #10, Monarch, DL, C5) 76.2 - 215.9mm 220 - 355.6mm 60 - 163g/m2 Up to 150 sheets
PRINTER INTERFACE STANDARD NETWORK PROTOCOLS		USB 2.0 Hi-Speed Ethernet (10Base-T/100Base-T) Fax RJ-11 TCP/IPv4, TCP/IPv6, DHCP, SNMP v1/v2, BOOTP, RARP, HTTP, SMTP/POP3, WSD (print), AutoIP, Bonjour, LLTD, DNS, SNMP/UDP	USB 2.0 Hi-Speed
MEMORY STANDARD MAXIMUM		128MB 128MB	64MB 64MB
POWER REQUIREMENTS POWER CONSUMPTION OPERATING READY SLEEP		310W (Colour), 350W (Mono) 65W 16W (Sleep) / 7W (Deep Sleep)	285W (Colour/Mono) 66W 11W (Sleep) / 5W (Deep Sleep)
ENVIRONMENTAL CONDITIONS TEMPERATURE HUMIDITY NOISE LEVEL SOUND PRESSURE OPERATING STORAGE OPERATING STORAGE PRINTING STANDBY PRINTING MODE READY MODE		10 - 32°C 0 - 35°C 10 - 85% RH 15 - 80% RH 6.50B (ADF) / 6.43B (non ADF) 4.30B 50dB(A) (mono), 48dB(A) (colour) 23dB(A)	10 - 32°C 0 - 35°C 10 - 85% RH 15 - 80% RH 6.32B 4.30B 47dB(A) (mono), 46dB(A) (colour) 20dB(A)
PRINTER DRIVER / UTILITIES OS SUPPORT		Windows® XP (32bit/64bit) / Vista (32bit/64bit) / Server 2003 (32bit/64bit) / Server 2008 (32bit/64bit) / Server 2008 R2 (64bit) / Windows® 7 (32bit/64bit) / Mac OS 10.4.11 or later	Windows® XP (32bit/64bit) / Vista (32bit/64bit) / Server 2003 (32bit/64bit) / Server 2008 (32bit/64bit) / Server 2008 R2 (64bit) / Windows® 7 (32bit/64bit) / Mac OS 10.3.9 or later
PRINTER CONTROL LANGUAGE EMULATION STANDARD		Host based	Host based
CONSUMABLES TONER CARTRIDGE YELLOW (STANDARD) TONER CARTRIDGE MAGENTA (STANDARD) TONER CARTRIDGE CYAN (STANDARD) TONER CARTRIDGE BLACK (STANDARD) HIGH CAPACITY TONER CARTRIDGE YELLOW HIGH CAPACITY TONER CARTRIDGE MAGENTA HIGH CAPACITY TONER CARTRIDGE CYAN HIGH CAPACITY TONER CARTRIDGE BLACK		PAGE YIELD 700*1 700*1 700*1 700*1 1,400 *1 1,400 *1 1,400 *1 2,000 *1 ORDER CODE C13S050669 C13S050670 C13S050671 C13S050672 C13S050611 C13S050612 C13S050613 C13S050614	PAGE YIELD 700*1 700*1 700*1 700*1 1,400 *1 1,400 *1 1,400 *1 2,000 *1 ORDER CODE C13S050669 C13S050670 C13S050671 C13S050672 C13S050611 C13S050612 C13S050613 C13S050614

*Specific driver / utilities usage is applicable to Windows OS only