

SPECIFICATIONS

EPSON
EXCEED YOUR VISION

Weight-
Approx. 21.5kg (23.14 Kg w/consumables)



CONSUMABLES	
IMAGING CARTRIDGE	(20,000 pages*6*7) C13S051170
RETURN IMAGING CARTRIDGE	(20,000 pages*6*7) C13S051173
FUSER UNIT (220 - 240V)	(200,000 pages*6*7) C13S053038

*1 From Standby mode
*2 The duration between the power being turned on and [Ready] being displayed is 17 seconds or less (at 23°C and 55% RH, with rated voltage and standard memory).
*3 The duration to recover from sleep mode till [Ready] is displayed is 17 seconds or less (at 23°C and 55% RH, with rated voltage).
*4 Weight including Imaging Cartridges.
*5 For Euro only
*6 The figures are approximate number of sheets pointed under conditions of continuous printing on A4 size paper with ISO 19752 pattern.
*7 Depending on various usages and environments page yield may reduce and come to its end of service life. It may occur even with toner left due to reaching the other parts' end of service life.



EPSON AcuLaser™ M4000N

PRINTER TYPE		Laser
PRINTING TECHNOLOGY		1200dpi
RESOLUTION		43ppm / 26.4ppm (Simplex/Duplex)
PRINT SPEED		7.9 sec*1
FIRST PAGE OUT		17 sec*2*3
WARM UP TIME		200,000 pages
MAXIMUM MONTHLY VOLUME		
PAPER HANDLING		
STANDARD PAPER INPUT	PAPER SIZE	700 sheets (150 Multi Purpose Tray + 550-sheet Cassette Unit) A4, A5, B5, LT, HLT, LGL, GLT, GLG, EXE, F4, C5, C6, DL, Com10, Monarch, IB5
MULTI PURPOSE TRAY	WIDTH	76.2 - 215.9 mm
	LENGTH	127.0 - 355.6 mm
	PAPER WEIGHT	64 - 216 g/m ²
550-SHEER PAPER CASSETTE UNIT	PAPER SIZE	A4, A5, B5, LT, HLT, LGL, GLT, GLG, EXE, F4, C6, DL, Com10, Monarch, IB5
	PAPER WEIGHT	64 - 216 g/m ²
550-SHEER PAPER CASSETTE UNIT (OPTION)	PAPER SIZE	Same as Standard Paper Cassette
	PAPER WEIGHT	Same as Standard Paper Cassette
DUPLEX UNIT (OPTION)	PAPER SIZE	A4, A5, B5, LT, HLT, LGL, GLT, GLG, EXE, F4
	PAPER WEIGHT	64 - 216g/m ²
MAXIMUM PAPER INPUT		1800 sheets (150 MP Tray + 550 Sheet Paper Cassette + 2x extra 550 Sheet Paper Cassette)
PAPER OUTPUT STANDARD/MAXIMUM		500 sheets (Face Down), 70 sheets (Face Up)
PAPER OUTPUT STANDARD/MAXIMUM (OPTION)		500 sheets (Stacker)
INTERFACES		
		Hi-Speed USB (2.0 compatible), Parallel Interface (IEEE 1284), and 10/100 Base TX Ethernet Interface
MEMORY		
STANDARD/MAXIMUM		64 MB / 576 MB
POWER REQUIREMENT		
ENERGY STAR COMPLIANT		
RATED FREQUENCY		50Hz / 60Hz (220 - 240V)
RATED CURRENT		5.5A / 11A (220 - 240V)
POWER CONSUMPTION	OPERATING	Max. 1120 Wh / 1090 Wh (220 - 240V) Ave. 654 Wh (220 - 240V)
	STANDBY	77 Wh / 78 Wh (220 - 240V)
	SLEEP	10 Wh / 7Wh (220 - 240V)
ENVIRONMENTAL CONDITIONS		
TEMPERATURE	OPERATION	10 to 32°C
	STORAGE	0 to 35°C
HUMIDITY	OPERATION	15 to 85% RH
	STORAGE	15 to 80% RH
SOUND POWER	OPERATING	7.25 B (A)
	STANDBY	5.3 B (A)
SOUND PRESSURE	OPERATING	56.1 dB (A)
	STANDBY	28 dB (A)
DIMENSION AND WEIGHT*4		
AL-M4000N		428 x 480 x 404 mm, 21.5 Kg (23.14 Kg w / consumables)
AL-M4000N with 550-sheet Paper Cassette		428 x 480 x 499 mm, 27.8 Kg (29.44 Kg w / consumables)
AL-M4000N with 2x 550-sheet Paper Cassette		428 x 480 x 589 mm, 34.1 Kg (35.74 Kg w / consumables)
AL-M4000N with Duplex Unit		428 x 572 x 404 mm, 23.4 Kg (25.04 Kg w / consumables)
AL-M4000N with Stacker		428 x 480 x 539 mm, 24.1 Kg (25.74 Kg w / consumables)
AL-M4000N with 550-sheet Paper Cassette and Stacker		428 x 480 x 634 mm, 30.4 Kg (32.04 Kg w / consumables)
AL-M4000N with 2x 550-sheet Paper Cassette and Stacker		428 x 480 x 724 mm, 36.7 Kg (38.34 Kg w / consumables)
AL-M4000N with 2x 550-sheet Paper Cassette, Duplex Unit and Stacker		428 x 572 x 724 mm, 38.6 Kg (40.24 Kg w / consumables)
PRINTER DRIVER/UTILITY		
PRINTER DRIVER		Microsoft® Windows® 2000/XP/Server2003/Vista/Server2003 x64/XP x64/Vista x64
EPSON STATUS MONITOR		Microsoft® Windows® 2000/XP/Server2003/Vista/Server2003 x64/XP x64/Vista x64
POSTSCRIPT® PRINTER DRIVER		Microsoft® Windows® 2000/XP/Server2003/Vista/Server2003 x64/XP x64/Vista x64 and Mac™ OS X
EPSON SCREEN FONT		Microsoft® Windows® 2000/XP/Server2003/Vista/Server2003 x64/XP x64/Vista x64
EPSON BARCODE FONTS		Microsoft® Windows® 2000/XP/Server2003/Vista/Server2003 x64/XP x64/Vista x64
EPSONNET PRINT		Microsoft® Windows® 2000/XP/Server2003/Vista/Server2003 x64/XP x64/Vista x64
EPSONNET CONFIGURATION		Microsoft® Windows® 2000/XP/Server2003/Vista/Server2003 x64/XP x64/Vista x64 and Mac™ OS X
EPSONNET EASYINSTALL		Microsoft® Windows® 2000/XP/Server2003/Vista/Server2003 x64/XP x64/Vista x64
EPSON WEB-TO-PAGE		Microsoft® Windows® 2000/XP
JAVA RUNTIME ENVIRONMENT SE		Microsoft® Windows® 2000/XP/Server2003/Vista/Server2003 x64/XP x64/Vista x64
USER GUIDES		Microsoft® Windows® 2000/XP/Server2003/Vista/Server2003 x64/XP x64/Vista x64 and Mac™ OS X
DATA FILE FOR*5		Microsoft® Windows® 2000/XP/Server2003/Vista/Server2003 x64/XP x64/Vista x64
PRINTER CONTROL LANGUAGE EMULATIONS		
STANDARD		ESC/Page™, ESC/P2™, FX 1239X, PCL5e, PCL6, A-PS (Level 3), PDF 1.3
RESIDENT TYPEFACES		
SCALABLE		84 ESC / Page, 95 PCL5c, 80 PCL6, 17 PS3
BITMAP		7 ESC / Page, 5 PCL5c, 1 PCL6
TYPEFACE		10 ESC / P2, 8 FX, 81239X
OPTIONS		
550-SHEET PAPER CASSETTE UNIT		C12C802471
DUPLEX UNIT		C12C802481
STACKER		C12C802111
HARDDISK		C12C824172
DIMM MEMORY 64MB RAM (90 pin)		7100742
DIMM MEMORY 128MB RAM (90 pin)		7100744
DIMM MEMORY 256MB RAM (90 pin)		7102850

EPSON is the registered trademark of Seiko Epson Corporation.

All other product names and other company names used herein are for identification purposes only and are the trademarks or registered trademarks of their respective owners.

EPSON disclaims any and all rights in those marks. Scan/Print samples shown herein are simulations. Specifications are subject to change without notice.

EPSON
EXCEED YOUR VISION

www.epson.com.sg

INDIA - (91) 80-305-15000, CALCUTTA - 228 31589/90, CHENNAI - 302 77500, MUMBAI - 282 61515/16/17, NEW DELHI - 306 15000
INDONESIA - (62) 21-572-3161
MALAYSIA - (60) 3-562-88288
PHILIPPINES - (632) 706-2663
SINGAPORE - (65) 6586-5500, (65) 6586-3111
THAILAND / INDOCHINA - (662) 685-9888

Dealer's Stamp

Printed in April 2008

EPSON AcuLaser™ M4000N



Performance Technology for Intensive Printing Tasks



- High speed printing with true resolutions quality for professional printing needs
- Optional expandability well suited for growing business needs
- Versatile printing capability – including forms, letters and envelopes

TOP-NOTCH EXPANDABLE CAPABILITIES FOR WORKGROUP PRINTING



EPSON AcuLaser™ M4000N

Achieve impeccable team productivity in a workgroup setting with Epson AcuLaser™ M4000N that offers maximum efficiency at the best value. A high-performance A4 mono laser printer that delivers superb quality and fast printing in the office, it's capacity for expansion ensures that printing needs in the office are taken care now and well into the future.

Growing with Business at Maximum Efficiency

Ideal for growing organisations, the printer is designed with expandable capabilities for cost-efficient hardware upgrades to meet additional demands. The standard processor memory of 64MB RAM is expandable up to 576MB to cater for large files or continuous printing, while adding on an optional Hard Disk Drive (HDD) provides Advanced Job Management functions for more complex tasks at high speed, including:

- Confidential jobs – Applies passwords to print jobs stored on the printer's memory, so that the printer prints only when security is verified by the user
- Re-print & Stored jobs - Stores the current job, so that users can choose to retrieve and reprint it later through access on the printer's control panel. This allows commonly used documents to be accessed by anyone via the printer without taking up memory in different users' PC.
- Verify jobs – Automatically prints one copy to allow users to verify the content, before printing multiple copies

**576MB
MEMORY
CAPACITY**



Friendly and Hassle-free for All Users

Not only is it easy to operate and maintain, a large LCD screen provides graphical help support whenever necessary. Bookmark menus allow frequently used basic functions to be accessed at the push of a button.



Maintenance is kept simple and minimal with just two high-yield replaceable supplies – a toner cartridge capable of 20,000 prints, and an extended life fuser unit of 200,000 prints.

EPSON AcuBrite™ Technology

The Epson AcuLaser™ M4000N uses EPSON AcuBrite™ Toners that ensures uniformed toner particles and wax distribution, giving you consistently rich image quality that impresses. Through this unique printing technology, you get superb clarity with high sharpness, and outstanding crisp, bold black text that last.

Professional Quality Printing at Blistering Speeds

The Epson AcuLaser™ M4000N assures relentless performance that lives up to the demanding expectations of the busy work environment, churning out up to 43ppm. Wait no longer than you have to – with a warm-up time of 17 seconds and First Page Out Time in just 7.9 seconds. With an optional duplex unit, print 100 PDF pages in just less than two minutes! Professional true resolution of a splendid 1200 dpi print resolution is maintained always, even at full speed.



Staggering Print Volume for Intensive Workload

Ready to take on high volume intensive printing jobs as and when required, this is the answer for tight printing schedules with a high monthly print volume of 200,000 pages per month. Able to support continuous heavy-duty printing up to an average of 6,666 pages a day, Epson AcuLaser™ M4000N is a versatile network printer with muscle.

Plug and Play to a Variety of Interfaces



With built-in Standard EpsonNet 10/100 Base TX Ethernet, high-speed USB, parallel interface and an optional Type B interface, the printer integrates seamlessly into varied network environments. Eliminating the need for additional hardware like adaptors and print server hubs, significant cost savings are achieved.

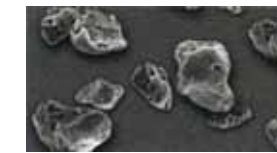
Versatile Paper Management

Conveniently equipped with two paper trays, the printer houses up to 550 sheets of A4 paper for volume printing, and holds envelopes or special paper such as forms and letterheads in another 150-sheet tray. For heavy usage and to save precious time and effort, it is possible to add on up to 2 more 550-sheet paper cassettes, yielding up to 1,800 sheets without a need to reload. An optional paper stacker can be added to the printer, should frequent sorting be required. Fit in an optional duplex unit to automatically allow printing on both sides of the paper, saving both time and money.



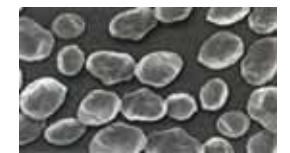
Uniform Image Quality

Conventional Toner



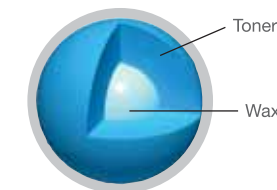
Average particle size 8.0 micron
Particle shape Non-uniform

AcuBrite

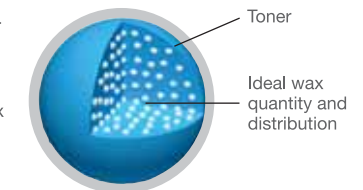


Average particle size 5.8 micron
Particle shape Uniform

Uniform Distribution of Pigment and Wax



Conventional Toner



EPSON AcuBrite™ Toner

The uniform distribution of wax provides the optimum amount of wax required for fusion as well as outstanding transparency for OHP presentations.

Return and Recycle: Get Cost Savings When You Return Used Cartridges



Be part of Epson's Return Toner Program, and contribute a part in saving the environment. Enjoy high quality and fast prints with a smaller carbon footprint by returning the empty cartridges from Epson AcuLaser™ M4000N for recycling.