

All The Speed and Cost Efficiency You Need.



Epson AcuLaser™ M1400
LED Printer

Epson AcuLaser™ MX14
LED Printer

Epson AcuLaser™ MX14NF
LED Printer

IMAGING INNOVATION



**POWER
SAVINGS**



**FAST
PERFORMANCE**



**HIGHLY
COMPACT**

The Epson AcuLaser™ MX14NF, MX14 and M1400 LED printers pack all the performance you need, giving you a full range of monochrome business printing solutions that are not only affordable to own but also highly cost efficient.

- **Affordable and Economical**

Your choice of highly economical standard toner cartridges, or high-capacity toner cartridges for high-volume printing at very low cost per page.

- **Maximise Productivity**

With a print speed of 24ppm and high standard memory capacity of up to 128MB, the Epson AcuLaser™ M1400 LED printers are some of the most efficient printers in their class.

- **Multifunctional Capabilities**

Improve office workflow and productivity with printing, scanning, copying, faxing and networking functions*.

* Selected functions only available on Epson AcuLaser™ MX14 and MX14NF LED printers



Epson AcuLaser™ MX14NF LED Printer

IMAGING INNOVATION

The Epson AcuLaser™ M1400 LED printers provide the perfect solutions to those who need high quality documents printed quickly and affordably. With them, you can be assured of better productivity and lower running cost.

Affordable and Economical

Not only is the M1400 Series of LED printers highly affordable to own, all models come with standard toner cartridges that achieve low toner cartridge cost, while heavy users can opt for high capacity cartridges for an even lower cost-per-page. Smart paper saving features like multiple-up and manual duplex printing help to lower your running costs.

Standard Capacity Toner Cartridge
Page yield: 1,000 pages



High Capacity Toner Cartridge
Page yield: 2,200 pages

Fast, Efficient and Reliable Performance

Whether for SME or SOHO setups, the Epson AcuLaser™ M1400 LED printers deliver performance that is amongst the fastest and most reliable in its class, with print speeds of up to 24ppm.

Enjoy faster processing of multiple print jobs and more efficient data buffering right out of the box with a high standard memory capacity of 64MB on the M1400 and 128MB on the MX14 and MX14NF.

128 MB
MEMORY
CAPACITY

for Epson AcuLaser™ MX14NF and MX14 LED printers

64 MB
MEMORY
CAPACITY

for Epson AcuLaser™ M1400 LED printer

Multifunctional Capabilities

(for Epson AcuLaser™ MX14 and MX14NF LED printers only)



Streamline your workflow for better productivity with the multi-function features in the the Epson AcuLaser™ MX14 and MX14NF LED printers. Both models come with a flatbed scanner while the MX14NF includes a 15-sheet automatic document feeder and direct scanning to email and networked folders as well as USB storage devices. The MX14NF includes Ethernet connectivity and effortless faxing with a fast fax speed of up to 3 sec per page, 99 speed dials, 6 group dials and PC-Fax (send only) capability. The 200 page* fax storage memory ensures all incoming faxes will be received securely. Other handy features include:

1. Auto Redials (up to 9 times)
2. Delayed Sending
3. Fax Broadcast (up to 99 recipients)
4. Junk Mail Filter
5. Polling (poll to receive)
6. Remote Receive

*For details, please refer to specifications

Exceptional Output Every Time

With one of the highest print resolutions in its class at 1200 dpi (unenhanced), you can be assured of crisp, clear text, graphics and images down to the finest details on all of your documents.

Revolutionary Design – One of the Smallest and Lightest Printers in its Class

The M1400 Series of LED printers pack all the features and performance you need in a monochrome business printer, into a highly compact and efficient package. Not only are the main units small in footprint, even the toner cartridges are much smaller to take up less space compared to conventional cartridges.

Consistently High Quality Printing



The Epson AcuLaser™ M1400 LED printers use Epson AcuBrite™ toners that ensure uniform toner particle size and

wax distribution, giving you consistently high image quality that impresses. Through this unique printing technology, you get superb clarity with sharpness and outstandingly crisp and bold black text that lasts.

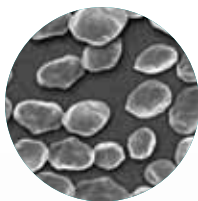
Uniform Image Quality

Conventional Toner



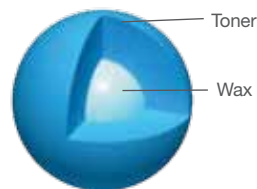
Average particle size: 8.0 micron
Particle shape: non-uniform

Epson AcuBrite™ Toner

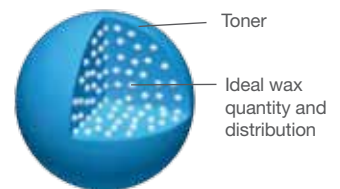


Average particle size: 5.8 micron
Particle shape: uniform

Uniform Distribution of Pigment and Wax



Conventional Toner



Epson AcuBrite™ Toner

The uniform distribution of wax provides the optimum amount of wax required for fusion as well as outstanding transparency for OHP presentations.

Low Power Consumption and Eco-Friendliness



Accredited under the Energy Star programme, a government initiative spearheaded by the United States that promotes the use of energy-efficient products, The AcuLaser™ M1400 Series of LED printers offer a number of features that will help you enjoy significant energy savings and protect our environment.

	Epson AcuLaser™ MX14NF LED Printer	Epson AcuLaser™ MX14 LED Printer	Epson AcuLaser™ M1400 LED Printer
FUNCTION	Print, Scan, Copy, Fax, Network	Print, Scan, Copy	Print
ADF	Yes	No	No
PRINT SPEED (BK)	24ppm	24ppm	24ppm
MEMORY CAPACITY	128MB	128MB	64MB
PROCESSOR	300MHz	300MHz	150MHz
INTERFACE	USB 2.0 Hi-Speed Ethernet (10Base-T/100Base-T) Fax RJ-11	USB 2.0 Hi-Speed	USB 2.0 Hi-Speed

Partners in Perfection

Epson Perfection™ V33 Scanner (for Epson AcuLaser™ M1400 LED printer)

Achieving high quality scans is a snap with the Epson Perfection V33. Its 4800 dpi optical resolution captures every photo, document, 3D object and oversized artworks with amazing clarity and detail.



Epson EB-G5000 Series Projectors

Experience brilliant image quality with the world's number 1 projectors*. High powered projection solutions that offer reliability and outstanding performance in every environment. Epson 3LCD projectors offer superior colour luminance, producing vivid and sharp images.



*Source: Futuresource Consulting

Monochrome LED Printer

Epson AcuLaser™ MX14NF/MX14/M1400

SPECIFICATIONS

Epson AcuLaser™ MX14NF LED Printer

Weight: 9.9kg



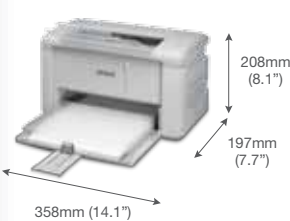
Epson AcuLaser™ MX14 LED Printer

Weight: 8.9kg



Epson AcuLaser™ M1400 LED Printer

Weight: 4.6kg



*1 The measuring method complies with ISO/IEC19752.



EPSON and EXCEED YOUR VISION are registered trademarks of Seiko Epson Corporation.

All other product names and other company names used herein are for identification purposes only and are the trademarks or registered trademarks of their respective owners.

EPSON disclaims any and all rights in those marks. Scan/Print samples shown herein are simulations. Specifications are subject to change without notice.

Machine life for MX14NF, MX14 and M1400 is rated at approximately 30,000 pages.

MODEL	Epson AcuLaser™ MX14NF LED Printer	Epson AcuLaser™ MX14 LED Printer	Epson AcuLaser™ M1400 LED Printer
PRODUCT CODE	C11CB77071	C11CB77051	C11CB77031
PRINTER TYPE PRINTING METHOD RESOLUTION PROCESSOR	Monochrome LED Printer 1200 x 1200 dpi 300 MHz	Monochrome LED Printer 1200 x 1200 dpi 300 MHz	Monochrome LED Printer 1200 x 1200 dpi 150 MHz
PRINT FEATURES PRINT SPEED FIRST PAGE OUT TIME WARM UP TIME	24ppm Less than 11 sec (A4 size) Less than 36 sec (from Off to Ready) Less than 25 sec (from Deep Sleep to Ready)	24ppm Less than 11 sec (A4 size) Less than 36 sec (from Off to Ready) Less than 25 sec (from Deep Sleep to Ready)	24ppm Less than 11 sec (A4 size) Less than 25 sec (from Off to Ready) Less than 25 sec (from Deep Sleep to Ready)
PAPER HANDLING STANDARD PAPER INPUT MULTI-PURPOSE TRAY PAPER TYPE PAPER SIZE WIDTH LENGTH PAPER WEIGHT MAXIMUM PAPER INPUT	Up to 160 sheets (Multipurpose feeder: 150 sheets + Priority Sheet Inserter: 10 sheets) Plain Paper (60 – 105g/ m2), Recycled (60 – 105g/ m2), Labels, Envelope, Lightweight Cardstock A4, B5, A5, LT, LGL, EXE, Folio, Label, Envelope (Com #10, Monarch, DL, C5) 76.2 – 220 mm 127 – 356 mm 60 – 163g/m2 Up to 160 sheets	Up to 160 sheets (Multipurpose feeder: 150 sheets + Priority Sheet Inserter: 10 sheets) Plain Paper (60 – 105g/ m2), Recycled (60 – 105g/ m2), Labels, Envelope, Lightweight Cardstock A4, B5, A5, LT, LGL, EXE, Folio, Label, Envelope (Com #10, Monarch, DL, C5) 76.2 – 220 mm 127 – 356 mm 60 – 163g/m2 Up to 160 sheets	Up to 150 sheets Plain Paper (60 – 105g/ m2), Recycled (60 – 105g/ m2), Labels, Envelope, Lightweight Cardstock A4, B5, A5, LT, LGL, EXE, Folio, Label, Envelope (Com #10, Monarch, DL, C5) 76.2 – 220 mm 127 – 356 mm 60 – 163g/m2 Up to 150 sheets
COPY FEATURES COPY RESOLUTION COPY SPEED FIRST COPY OUT TIME MULTIPLE COPIES ADF CONTINUOUS COPY	Up to 600 x 600 dpi Up to 8.5 cpm (1 to 1 copy) Up to 24 cpm (1 to N copy) Less than 24 sec (A4 Mono) Up to 15 sheets	Up to 300 x 300 dpi Up to 24 cpm (1 to N copy) Less than 24 sec (A4 Mono) 1 – 99 sheets	
SCAN FEATURES SCANNING METHOD SCAN RESOLUTION ADF CAPACITY	Flatbed + ADF 1200 x 1200 dpi Up to 15 sheets	Flatbed 1200 x 1200 dpi	
FAX FEATURES FAX SPEED TRANSMISSION SPEED RECEIVE MEMORY SPEED DIAL NUMBERS GROUP DIAL NUMBERS FAX FUNCTIONS	Up to 3 sec / page 33.6 Kbps 2MB (Up to 200 pages based on ITU-T No. 1 chart, A4, normal resolution mode) Up to 99 numbers Up to 6 groups Speed dial, PC Fax, Memory Reception		
PRINTER INTERFACE STANDARD NETWORK PROTOCOL	USB 2.0 Hi-Speed Ethernet (10Base-T/100Base-T) Fax RJ-11 TCP/IP: TCP/IPV4, TCP/IPV6, DHCP, SNMP V1/V2, BOOTP, RARP, HTTP, SMTP/POP3, WSD (PRINT), AUTOIP, LLTD, DNS, SNMP/UDP	USB 2.0 Hi-Speed	USB 2.0 Hi-Speed
MEMORY STANDARD MAXIMUM	128MB 128MB	128MB 128MB	64MB 64MB
POWER REQUIREMENTS POWER CONSUMPTION OPERATING READY SLEEP DEEP SLEEP	380W or less 58W or less 8.5W or less 3.5W or less	380W or less 58W or less 7.5W or less 3.5W or less	380W or less 62W or less 7.8W or less 4.0W or less
ENVIRONMENTAL CONDITIONS TEMPERATURE HUMIDITY NOISE LEVEL SOUND PRESSURE PRINTING STANDBY PRINTING READY	10 – 32°C 0 – 35°C 10 – 85% RH 15 – 80% RH 7.19B (ADF) / 6.74B (flatbed) 4.30B 54 dB(A) 15dB(A)	10 – 32°C 0 – 35°C 10 – 85% RH 15 – 80% RH 6.74B 4.30B 54dB(A) 15dB(A)	10 – 32°C 0 – 35°C 10 – 85% RH 15 – 80% RH 6.74B 4.30B 52dB(A) 15dB(A)
PRINTER DRIVER / UTILITIES OS REQUIREMENT	Windows® XP (32bit/64bit) / Vista (32bit/64bit) / Server 2003 (32bit/64bit) / Server 2008 (32bit/64bit) / Server 2008 R2 (64bit) / Windows® 7 (32bit/64bit) Mac OS X 10.4.11 / 10.5.8 or later, 10.6.X (PowerPC, Intel X86 processor)	Windows® XP (32bit/64bit) / Vista (32bit/64bit) / Server 2003 (32bit/64bit) / Server 2008 (32bit/64bit) / Server 2008 R2 (64bit) / Windows® 7 (32bit/64bit) Mac OS X 10.4.11 / 10.5.8 or later, 10.6.X (PowerPC, Intel X86 processor)	Windows® XP (32bit/64bit) / Vista (32bit/64bit) / Server 2003 (32bit/64bit) / Server 2008 (32bit/64bit) / Server 2008 R2 (64bit) / Windows® 7 (32bit/64bit) Mac OS X 10.4.11 / 10.5.8 or later, 10.6.X (PowerPC, Intel X86 processor)
	*Specific driver / utilities usage is applicable to Windows OS only		
PRINTER CONTROL LANGUAGE EMULATION STANDARD	Host based	Host based	Host based
CONSUMABLES HIGH CAPACITY TONER CARTRIDGE STANDARD CAPACITY TONER CARTRIDGE	PAGE YIELD 2,200 *1 1,000 *1 ORDER CODE C13S050650 C13S050652	PAGE YIELD 2,200 *1 1,000 *1 ORDER CODE C13S050650 C13S050652	PAGE YIELD 2,200 *1 1,000 *1 ORDER CODE C13S050650 C13S050652

