

B-SA4

TOSHIBA
Leading Innovation >>>

B-SA4



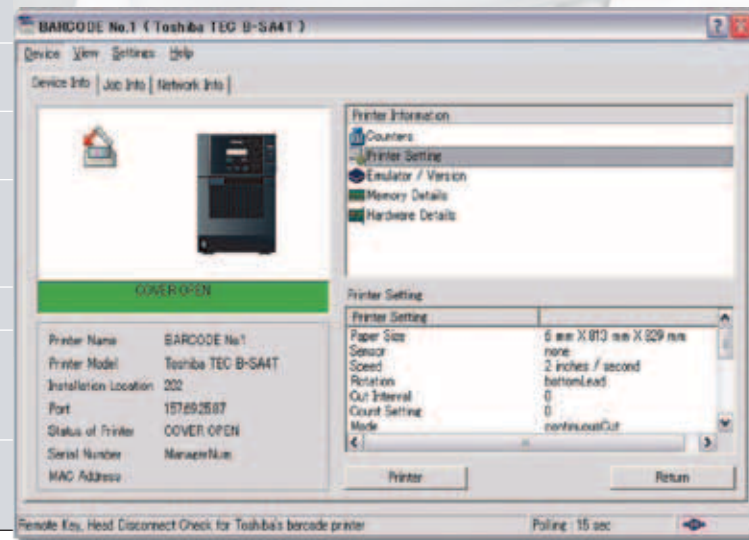
Specifications

Models	B-SA4TM-GS12 (203 dpi industrial)	B-SA4TM-TS12 (300 dpi industrial)	B-SA4TP-GS12 (203 dpi desktop)	B-SA4TP-TS12 (300 dpi desktop)
Technology	Thermal Transfer / direct thermal			
Resolution	8 dots/mm (203 dpi), optional 11.8 dots/mm (300 dpi)			
Max. Print Width	104mm/4.09" with 203 dpi printhead 105.7mm/4.16" with 300 dpi printhead			
Max. Print Length	995 mm/ 39.17"			
Print Speed	Up to 152.4 mm/sec (6 ips)			
Interfaces	Bidirectional parallel port, USB 2.0, LAN (10/100 BASE) serial port*, wireless LAN*			
Barcodes	UPC/EAN/JAN, Code 39, Code 93, Code 128, EAN 128, NW7, MSI, Industrial 2 of 5, ITF, Postnet, RM4SCC, KIX-code, RSS14, Customer Bar Code			
2D Codes	Data Matrix, PDF 417, Maxicode, QR code, Micro PDF 417, CP Code			
Fonts	Bitmap font (21 fonts), Outline font (4 types), Price font (3 types)			
Optional	Cutter module, strip module, wireless LAN board, serial interface board, RFID modules, 300 dpi printhead, RTC (real time clock)			
Power Supply	Universal power source AC 100 to 240V, 50/60Hz ±10%			
Dimensions	TM: 238 mm (W) x 401.7 mm (D) x 331.5 mm (H) (or 9.37" W x 15.8" D x 13" H) TP: 244 mm (W) x 319 mm (D) x 366 mm (H) (or 9.6" W x 12.6" D x 14.4" H)			
Weight	TM: 15 kg / 33 lbs. TP: 12.7 kg / 28 lbs. (without media and ribbon)			

Customers' benefits

The B-SA4 is packed with a multitude of features for the user, including:

- high speed printing leading to increased efficiency and productivity
- time-saving and minimal training due to fast and easy media loading.
- lower servicing and maintenance cost with user toolless replacement of the print head and platen
- versatile design to suit any environment or application
- perfect readability of labels and barcodes due to flexible high quality print technology
- Bartender UltraLite labelling software included.



* Option

All company and/or product names are trademarks and/or registered trademarks of their respective owners.
All features and specifications described in this brochure are subject to change without notice.

TOSHIBA
Leading Innovation >>>

TOSHIBA TEC AMERICA

4401-A Bankers Circle
Atlanta, GA 30360 U.S.A.
T.770-449-3040 F.770-449-1152
www.toshibatecusa.com

TOSHIBA TEC CANADA

370 Britannia Road East, Unit #1
Mississauga, Ontario L4Z 1X9, Canada
T.905-890-8283 F.905-890-0082
www.toshibateccanada.com

Part Number B-312



TOSHIBA TEC announces the first of a new generation of products within their globally recognized, highly diverse product line. The TOSHIBA B-SA4 barcode label printer provides the functionality and robustness of an industrial printer with the compact footprint and ease of use of a desktop printer. For ultimate networking capabilities, it comes with a wide variety of communication interfaces, enabling you to manage your whole network of printers from a central source.

www.toshibatecusa.com

Versatile design with industrial performance

TOSHIBA

Leading Innovation >>>



B-SA4

Suitable Applications

The B-SA4 really is the perfect 'Total Solution' for any printing application, with high-quality output, industrial performance, versatile design, advanced functionality including RFID options and the backing of a globally recognized quality brand.

Its ergonomic design makes the B-SA4 the printer of choice for any quiet office situation, while the superior quality output and exceptional performance ensure that it fits perfectly with robust industrial environments.

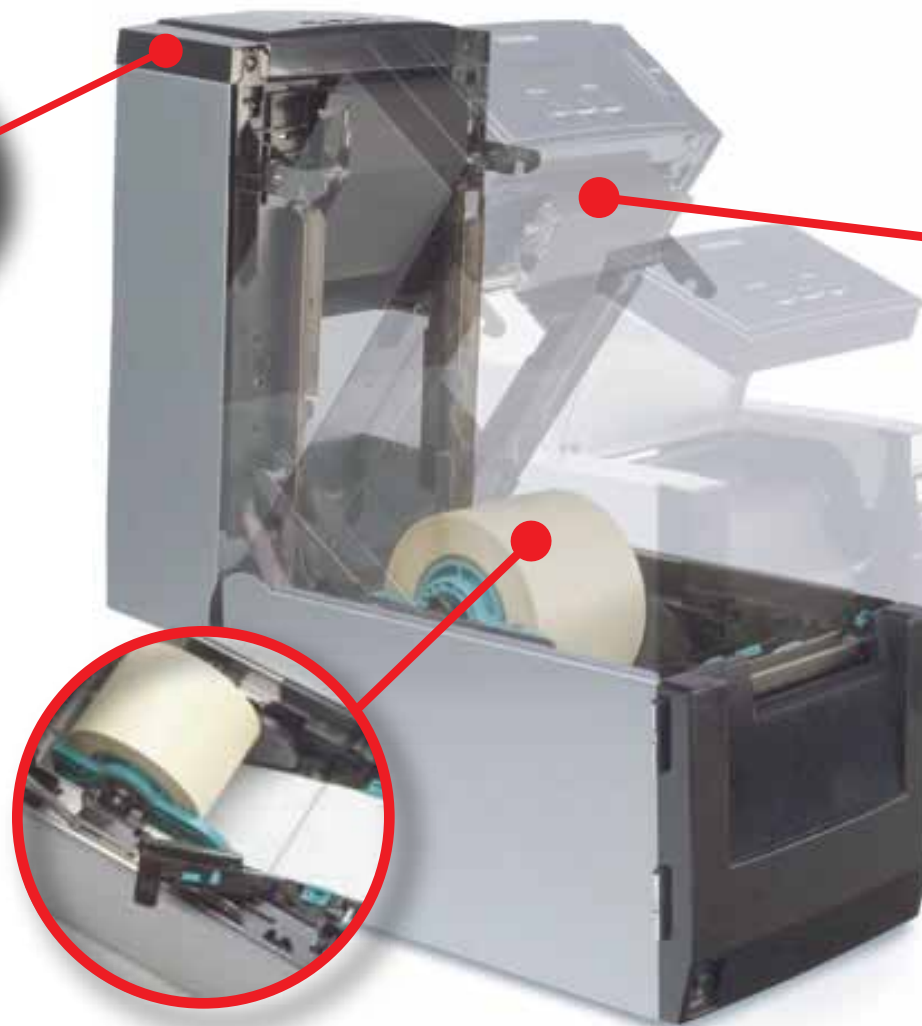


Speed and Functionality

This desktop printer with the performance of an industrial printer, offers high-speed printing and enhanced throughput via a large choice of network interfaces: parallel, USB 2.0 and internal LAN as standard, with optional serial, wireless LAN and RFID interfaces (HF and UHF).

Backward Compatibility

The B-SA4 is compatible with legacy systems, TOSHIBA or non-TOSHIBA. The powerful BCI (programmable Basic Command Interpreter) allows the B-SA4 to print via non-TPCL datastreams.



Compact and Robust

With a small footprint, the front opening, top loading design ensures the B-SA4 is compact, while the choice of casing (plastic or metal) guarantees the printer is ergonomic for the office or robust enough for harsh operating environments. This provides the flexibility to configure the printer to suit most applications, from desktop to industrial. Extras such as peel-off and cutter modules fit neatly inside the front cover, ensuring the printer remains compact.

- Manufacturing
- Automotive
- Chemical Industry
- Pharmaceutical Industry
- Textile Industry
- Electronics
- Telecommunications
- Food Sector
- Retail Distribution
- Transport and Logistics
- Healthcare
- Utilities
- Government

SNMP Tools

(Simple Network Management Protocol)

The B-SA4 comes with an entire Central Network Management Suite, that allows the user to:

- manage all the SNMP printers in the network through their IP address and serial number
- update and format firmware across the network simultaneously
- view the status of each individual printer in real-time with real-time alerts, including instructions for troubleshooting.

The perfect "Total Solution" for any printing application with high-quality output!

Ease of Use

The graphical LCD display and simple to follow menu, ensures the user can set up and operate the B-SA4 with ease. The open-access front-loading design, with a space saving ergonomic design, allows trouble-free drop-in media loading with a moveable sensor adaptable to a wide range of different types of media.

High Print Quality

Fitted with a 200 dpi printhead as standard and with the flexibility to easily upgrade to 300 dpi, these machines are unique in the market.

Fully Compatible

Software and Supplies are compatible with TOSHIBA's previous models, the TEC B-452 and GB-431 printers, existing media stocks and grades do not need to be changed.

Ease of Maintenance

The B-SA4 facilitates simple user maintenance with easy access to main service parts. The snap-in printhead and quick change platen roller can be replaced by the operator without service technician intervention, lowering the total cost of ownership.



Options

- Real time clock
- Peel-off module
- Cutter
- RFID Kits (HF & UHF)