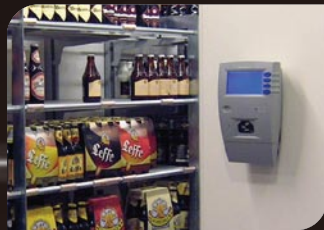




Discovery SG-20



Introduction

The Discovery SG-20 is a second-generation customer information terminal!

In this information age, shoppers want timely and instant access to any kind of product related information.

The Discovery SG-20 is an user friendly system that provides an excellent scanning performance in combination with a large and full graphical LCD display to ensure an easy communication. The Discovery helps to sustain and increase the relation with the customer and enables the retailer to effectively provide additional information and services.

The customer can retrieve specific information on actual pricing of products, total sum of purchases, bonus points status, discounts and special offers.

Discovery SG-20

Features

- Actual status of all product related information in any area.
- “One – to – one” communication: shoppers can read their bonus level real time, possibility for retailers to present personalized offers starting a “one – to one” relation with its loyal customers.
- Easily to configure, program and maintain from a remote location.
- Operation hardwired or wireless
- User friendly interface with 4 free definable buttons and omni – directional barcode scanning.
- Also usable as Entry/Exit gate terminal for e.g. self check – in/ – out applications.

Specifications

Physical Characteristics

Depth	100 mm
Width	181.5 mm
Height	298 mm
Weight	1.5 kg
Display	Full graphical display featuring a clear backlight and 8 character lines (240 x 128 LCD – CCFL)

Colour options	Black, Silver, Red
----------------	--------------------

Barcode Engine

Scantech omni – directional barcode scanner

Barcode types	EAN/UPC/JAN: EAN – 8 and EAN – 13 UPC – A and UPC – E, JAN – 8 and JAN – 13, 2 and 5 digit Add-On, Interleaved 2/5, Code 128, Code 93, Codabar, Code 39, MSI/Plessey
---------------	---

Operating Tools	I or U – start; easy – to – use configuration and demo tool. Free application software plus Ethernet driver
-----------------	--

Electrical

Power Supply	100 – 240 V ac, 50/60 Hz
--------------	--------------------------

Interfaces

1 parallel
2 serial ports : RS485 multi – drop network
RS232/RS422 point – to – point connection
Standard Ethernet TCP/IP communication
WiFi IEEE 802.11b/g with WEP 128 or WPA encryption (optional)

Audio

Beeper

User Interface

4 free definable buttons to	Select information Calculate (add up, grand total, etc.) Make system settings
-----------------------------	---

Programming

Light source	Advanced possibilities for programming messages and showing bitmap pictures of products and company logo on the display
--------------	---

Compatibility

Network version downwards compatible with installed base of SG10

Extension possibilities

Chip/smartcard reader, magnetic swipe card reader, hand held scanner link to scan large objects, printer link for bonus and coupon tickets

Physical Installation

Easy-mount installation frame with locking feature

Regularity of compliance

CE, FCC and RoHS. 



Due to Champtek's / Scantech ID's continuing product improvement programs, specifications and features are subject to change without notice.