



Trusted Point-of-Service

POS Touch Monitor



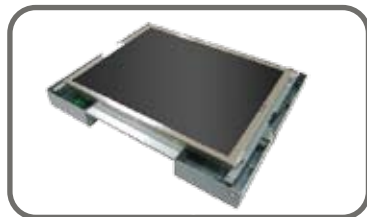
- >> 12" & 15" POS Touch Monitor
- >> Strong stand for POS application
- >> Option ELO 5W resistive touch

- PM-120
- PM-150

Sliver Bezel

PM-120N

Optional MSR



Specification



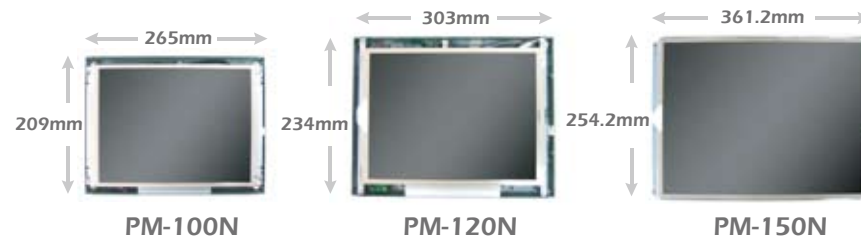
Display

Display Type	Active Matrix TFT LCD	
LCD Size	12.1"	15"
Display Area(mm)	245HX184H	304X228H
Moniotor Dimensions	326X266X172 mm	381X312.5X172 mm
Max Resolution	1024X768	
Color	16.7million	
Brightness	250cd/m2	260cd/m2
Contrast Ratio	400:1	450:1
Input Signal	RGB Analog	
Input Connector	D-sub 15 Pin Female	

Mechanical

Touch Panel	default Taiwan 5-wire Resistive Touch or ELO by option (Capacitive or SAW touch by option)
Color of Case	Black with Sliver front bezel(Optional Black front bezel)
Power Supply	24W/46W 12V External Power Adaptor
Temperature	Operation:0°C to 40°C
Humidity	10%to 90%
Optinal Device	Embedded MSR Reader (Triple Track by K/B Wedge or RS-232 Interface)

Open-frame LCD Kit



Puritron Technology Inc.

TEL: +886-2-2914-7298

FAX: +886-2-2915-6795

E-mail : info@puritron.com.tw

Website : www.puritron.com.tw